

ARPJ-LA12350 (4W, 350mA)

Features

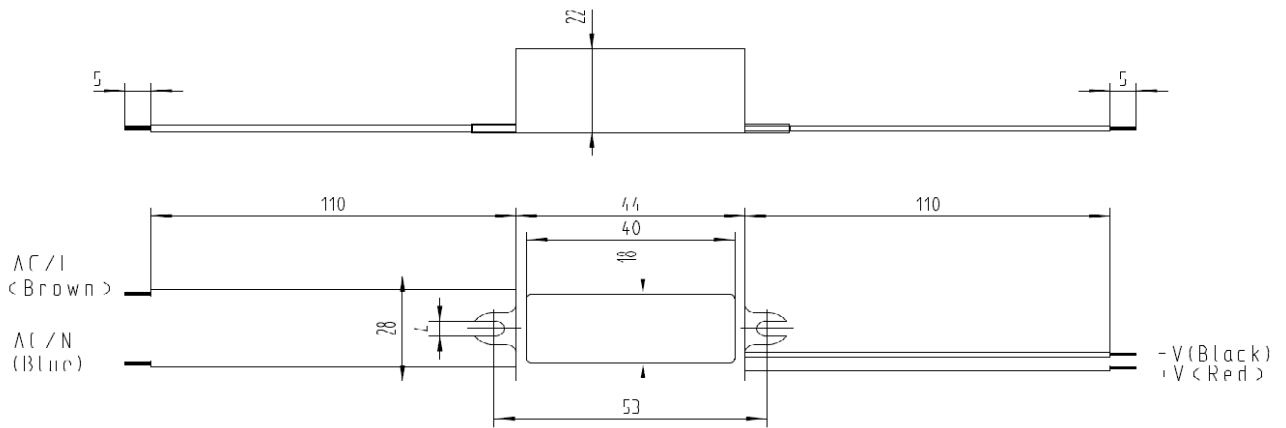
- Constant current mode power supply
- 100-240VAC input only
- Fully encapsulated with IP67 level IP67
- Protections: Over current/ Over Voltage
- Small and compact size
- UL1310 Class 2 power unit, pass LPS UL1310
- 100% full load burn-in test
- Suitable for LED lighting and moving sign applications
- 2 years warranty



Specification

OUTPUT	DC VOLTAGE	12V
	DC VOLTAGE RANGE	2-12V
	CURRENT RANGE	350mA \pm 5%
	RATED POWER	4.2W
	RIPPLE & NOISE(max.)	150mVp-p
	VOLTAGE TOLERANCE	\pm 5.0%
	LINE REGULATION	\pm 1.0%
	LOAD REGULATION	\pm 2.0%
SETUP, RISE, HOLD UP TIME		500ms,250ms, 50ms/230VAC
INPUT	VOLTAGE RANGE	90 -264Vac
	FREQUENCY RANGE	47~63Hz
	EFFICIENCY (Typ)	63% full load
	AC CURRENT	0.15A/90VAC
	INRUSH CURRENT(max.)	COLD STAT 0A/240VAC
	LEAKAGE CURRENT	0.35mA/240VAC
PROTECTION	OVER CURRENT	Withstand Short circui output for 30 seconds Protection type: Hiccup mode, recovers automatically after fault condition is removed.
	OVER VOLTAGE	13-18V Protection type: Hiccup mode
ENVIRONMENT	WORKING TEMP	-20+50°C
	WORKING HUMIDITY	20~90% RH non-condensing
	STORAGE TEMP., HUMIDITY	-40~80°C, 10~95% RH
	TEMP.COEFFICIENT	\pm 3%/°C (0~50°C)
	VIBRATION	10 ~ 500Hz, 2G 10min./1cycle, period for 60min. each along X,Y, Z axes
SAFETY & EMC	SAFETY STANDARDS	Design refer to UL1310 Class 2,TUVEN60950-1, EN61347-2-13, CAN/CSA C22.2 No. 223-M91, meet IP67
	WITHSTAND VOLTAGE	I/P-O/P:3KVAC
	ISOLATION RESISTANCE	I/P-O/P:>100M Ohms / 500VDC / 25~70% RH
	EMI CONDUCTION&RADIATION	Compliance to EN55022 (CISPR22) Class B
	HARMONIC CURRENT	Compliance to EN61000-3- 2,-3
	EMS IMMUNITY	Compliance toEN61000-4-2,3,4,5,6,8,11; ENV50204,EN55024, light industry level , criteria A
DIMENSION		59*28*22m m (L*W*H)

Mechanical specification:



Block Diagram

