

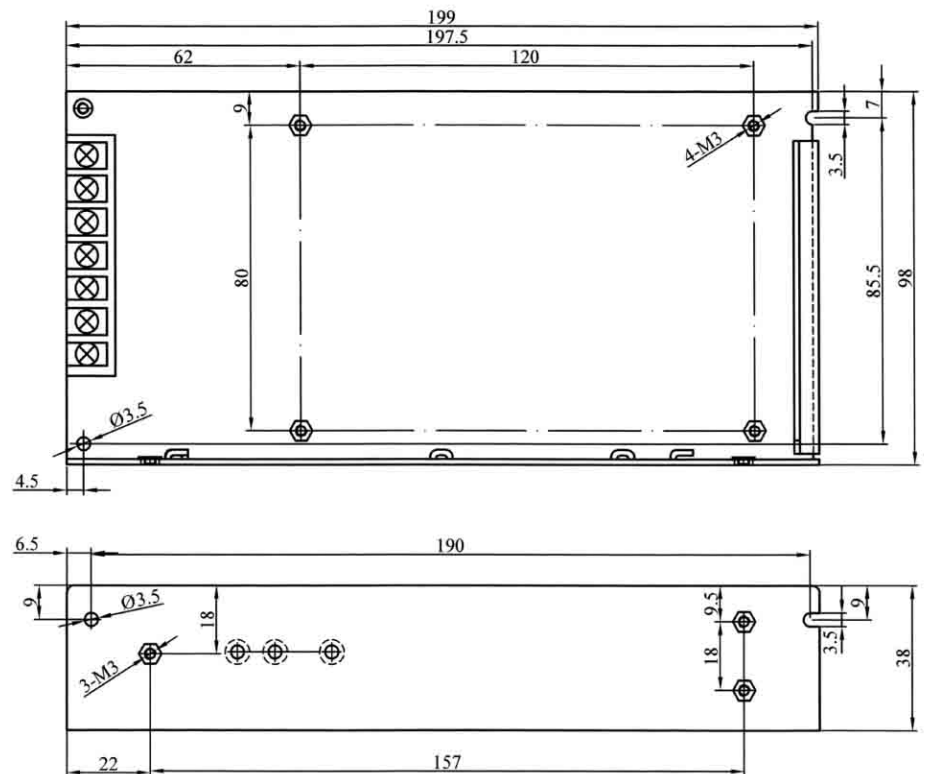
100W Single Output Switching Power Supply

- AC Input Range Selectable By Switch
- Low Cost, High Reliability
- Low Power Consumption
- Built-In EMI Filter
- Protections: Over Load/ Short Circuit
- 100% Full Load High Temperature Burn-in Test
- 1 Years Warranty



| | |
|---------------------------------|--|
| Input Voltage Range | 85~132VAC/ 180~264VAC Selectable By Switch |
| Input Frequency | 47-63Hz |
| Inrush Current | Cold Start, 25A/ 115VAC, 50A/ 230VAC |
| Output Adjustment Range | ±10% Rated Output Voltage |
| Line Regulation | ≤0.5% |
| Output Over Load Protection | 105%~150% Shut Off, AC Recycle To Re-Start |
| Output Short Circuit Protection | Shut Off, AC Recycle To Re-Start |
| Rise, Hold Up Time | 80mS, 20mS at Full Load (Typical) |
| Hi-pot Isolation | I/P-O/P, I/P-FG: 1.5KVAC, O/P-FG: 0.5KVAC |
| Operating Temperature Range | 0°C to +50°C@100%, -10°C@80%, +60°C@60% Load |
| Storage Temperature Range | -40°C to +85°C, 0 to 95%RH (Non-Condensing) |
| Safety Standards | Design Refer To UL1012 |
| EMC standards | Design Refer To FCC Part 15 J |
| Cooling Method | Free Air Cooling Convection |
| Weight | 0.62Kgs/pcs |

| Product model | DC output | Load regul. | R&N | Efficiency |
|---------------|---------------|-------------|-------|------------|
| HTS-100-3.3 | 3.3V, 0~20A | 1% | 75mV | 71% |
| HTS-100-5 | 5V, 0~20A | 1% | 75mV | 79% |
| HTS-100-7.5 | 7.5V, 0~13.6A | 1% | 75mV | 81% |
| HTS-100-9 | 9V, 0~11A | 1% | 90mV | 81% |
| HTS-100-12 | 12V, 0~8.5A | 0.5% | 100mV | 82% |
| HTS-100-13.5 | 13.5V, 0~7.4A | 0.5% | 100mV | 82% |
| HTS-100-15 | 15V, 0~6.7A | 0.5% | 100mV | 82% |
| HTS-100-24 | 24V, 0~4.5A | 0.5% | 100mV | 85% |
| HTS-100-27 | 27V, 0~3.7A | 0.5% | 100mV | 85% |
| HTS-100-48 | 48V, 0~2A | 0.5% | 100mV | 85% |



notes:

1. All dimensions in mm.
2. Tolerance (except cable length): xx = ±0.04
xxx = ±0.010