

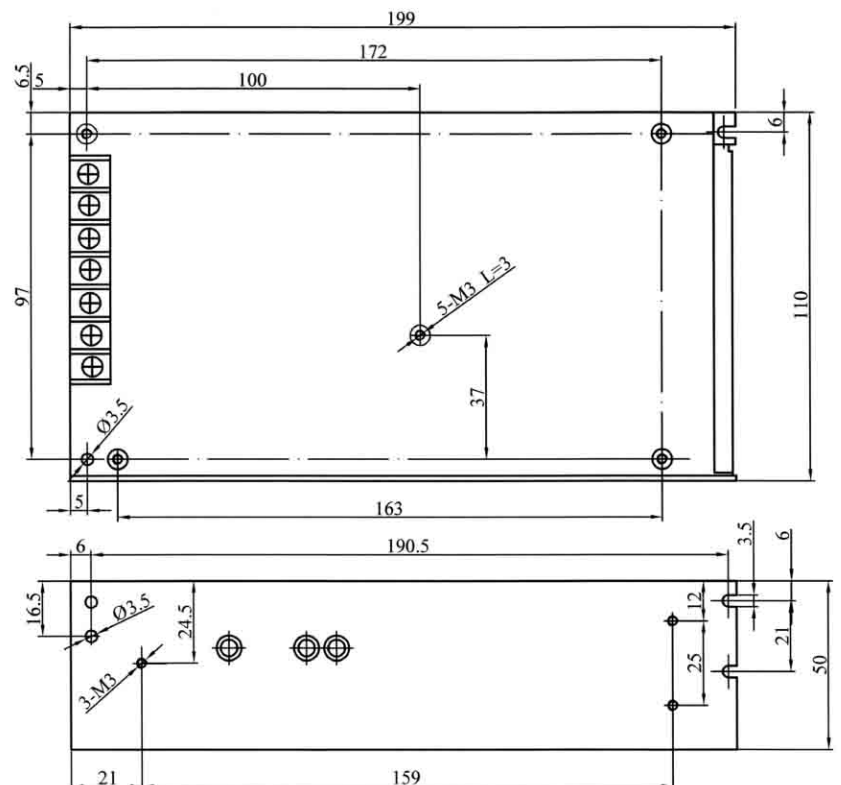
## 150W Single Output Certified Power Supply

- AC Input Range Selectable By Switch
- EMI Meets EN55022(CISPR22) Class B
- Low Power Consumption
- Approvals: UL / CUL / TUV / CB/ CE
- Protections: Over Load / Over Voltage / Short Circuit
- 100% Full Load High Temperature Burn-in Test
- 2 Years Warranty



Input Voltage Range	88~132VAC/ 176~264VAC Selectable By Switch
Input Frequency	47-63Hz
Inrush Current	Cold Start, 30A/ 115VAC, 50A/ 230VAC
Output Adjustment Range	±10% Rated Output Voltage
Line Regulation	≤0.5%
Output Over Load Protection	105%~150% Shut Off, AC recycle To Re-Start
Output Over Voltage Protection	115%~145% Rated Output Voltage
Output Short Circuit Protection	Shut Off, AC recycle To Re-Start
Rise, Hold Up Time	50mS, 20mS at Full Load (Typical)
Hi-pot Isolation	I/P-O/P: 3KVAC, I/P-FG: 1.5KVAC, O/P-FG: 0.5KVAC
Operating Temperature Range	0°C to +50°C@100%, -10°C@80%, +60°C@60% Load
Storage Temperature Range	-40°C to +85°C, 0 to 95%RH (Non-Condensing)
Safety Standards	UL60950-1, TUV EN60950-1
EMC standards	EN55022 class B, EN61000-3-2,3 EN61000-4-2,3,4,5,6,8,11,ENV50204
Cooling Method	Free Air Cooling Convection
Weight	0.8Kgs/pcs

Product model	DC output	Load regul.	R&N	Efficiency
HTS-150F-3.3	3.3V, 0~30A	1.5%	100mV	72%
HTS-150F-5	5V, 0~30A	1%	100mV	78%
HTS-150F-7.5	7.5V, 0~20A	1%	100mV	80%
HTS-150F-9	9V, 0~16.5A	1%	100mV	80%
HTS-150F-12	12V, 0~12.5A	0.5%	120mV	82%
HTS-150F-13.5	13.5V, 0~11A	0.5%	120mV	83%
HTS-150F-15	15V, 0~10A	0.5%	150mV	84%
HTS-150F-24	24V, 0~6.5A	0.5%	150mV	85%
HTS-150F-27	27V, 0~5.6A	0.5%	200mV	86%
HTS-150F-48	48V, 0~3.1A	0.5%	200mV	87%



**notes:**

1. All dimensions in mm.

2. Tolerance (except cable length): xx = ±0.04

xxx = ±0.010