



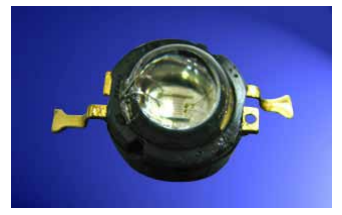
**REACH**  
The new EU chemicals legislation



ATTENTION  
OBSERVE PRECAUTIONS  
ELECTROSTATIC  
SENSITIVE DEVICES

# arlight

## OS-1W WarmWhite (90 Lm, 3000K)



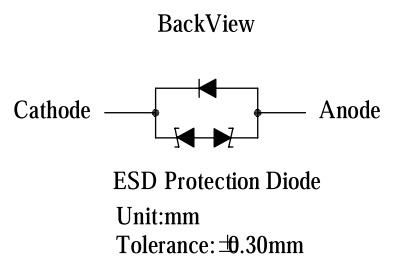
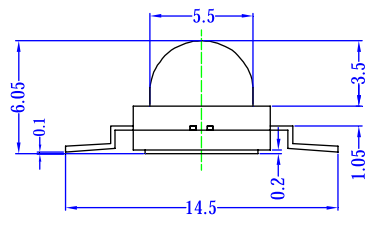
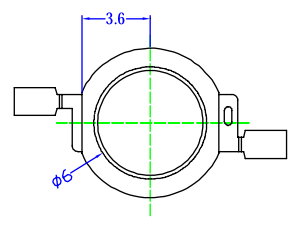
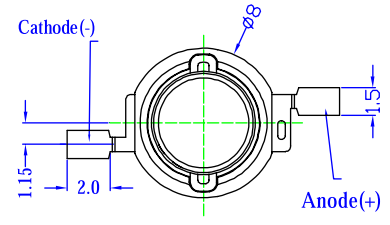
### Features

- Highest Luminous Flux
- Super Energy Efficiency
- Long Lifetime Operation
- Superior ESD protection
- Superior UV Resistance

### Applications

- Read lights (car, bus, aircraft)
- Portable (flashlight, bicycle)
- Bollards / Security / Garden
- Traffic signaling / Beacons
- In door / Out door Commercial lights
- Automotive Ext

### Outline Dimension



### Absolute Maximum Rating

Item	Symbol	Value	Unit
DC Forward Current	IF	400	mA
Pulse Forward Current*	IFP	500	mA
Reverse Voltage	VR	5	V
Power Dissipation	PD	1600	mW
Operating Temperature	Topr	-30 ~ +85	°C
Storage Temperature	Tstg	-40 ~ +100	°C
Lead Soldering Temperature	Tsol	260°C /5sec	

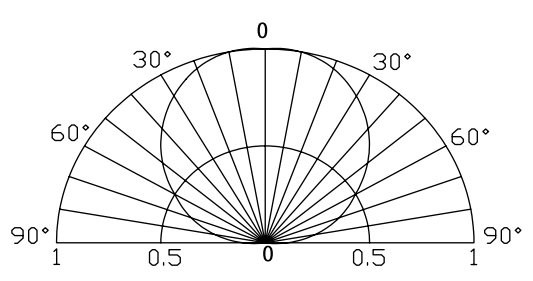
Notes: \*Pulse width Max.10ms Duty ratio max 1/10

### Typical Electrical / Optical Characteristics at TA=25°C

Item	Symbol	Condition	Min.	Typ.	Max.	Unit
DC Forward Voltage	VF	IF=350mA	3.0	3.3	4.0	V
DC Reverse Current	IR	VR=5V	-	-	10	$\mu$ A
Luminous Flux	$\Phi_v$	IF=350mA	80	90	-	lm
Color Temperature	CCT	IF=350mA	-	3000	-	K
Chromaticity Coordinates*	x	IF=350mA	-	0.45	-	-
	y	IF=350mA	-	0.41	-	-
50% Power Angle	$2\theta_{1/2}$	IF=350mA	-	120	-	deg

Note: Don't drive at rated current more than 5s without heat sink for Xeon 1 emitter series.

### Directivity



### Forward Operating Current (DC)

