

OSC8 / OSC14

Crystal Oscillator

Application

- Wireless LAN card & wire LAN card
- CD-ROM, CD-Player
- Monitor
- Computers, Workstation
- Switching, Hub< Router
- HDD

Feature

- Metal welded package
- CMOS IC circuit with tri-state function
- Full/Half size
- Frequency range from 1.0MHz to 125MHz
- Hybrid-circuit construction
- RoHS Compliant Optional

Specification

Model	OSC8 / OSC14
Frequency Range, MHz	0.5 ~ 155.0
Demensions, mm	14Pin: 20.8x13.2x5.08 8Pin: 13.2x13.2x5.08
Supply Voltage, DC	+3.0 ±10%, +5.0 ±10%
Frequency Stability, PPM	±10 ~ ±100
Operating Temp, °C	0 ~ +70 (-40 ~ +85 is available)
Storage Temp, °C	-40 ~ +85
Output Symmetry, %	40 ~ 60 (*45 ~ 55 is available)
Start up Time, ms	10
Aging, PPM	±5
Package	Tube

Standart Frequencies

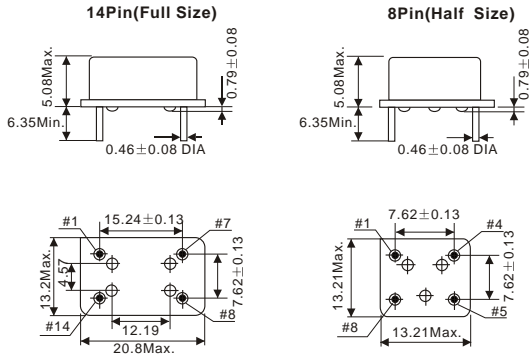
Standart Frequencies in MHz			
1.00000	8.19200	24.57600	33.86880
1.84320	9.83040	25.00000	40.00000
2.00000	10.00000	25.17500	48.00000
2.45760	11.28960	28.32200	50.00000
3.68640	12.00000	28.63600	60.00000
4.00000	14.31818	29.49120	64.00000
4.09600	14.74560	30.00000	66.00000
4.91520	16.00000	20.00000	72.00000
5.00000	16.38400	24.00000	80.00000
6.00000	18.43200	32.00000	
8.00000	19.66080	33.33000	

Other frequencies available. Please consult our sales office.

OSC8 / OSC14

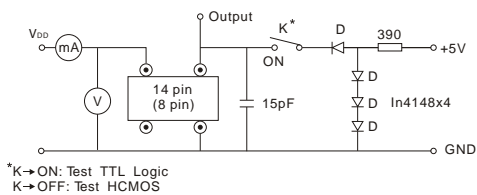
Crystal Oscillator

Through hole Dimensions (unit: mm)

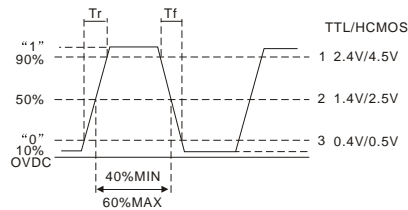


PIN	CONNECTION	PIN
1	Control voltage	1
7	Ground	4
8	Output	5
14	Supply	8

Circuit principle



Output wave form



Part Number Guide

Model	Type	Frequency, MHz	Voltage, V	Frequency Stability, ppm	Pulling, Ppm	Op Temp Range, °C	Tri-state
OSC	8 = 8Pin 14 = 14Pin	25.120	3.3 5	A = ±10 B = ±15 C = ±20 D = ±25 E = ±30 F = ±50 G = ±100 O = other	A = 100 B = 50 C = 150 S = 75	1 = 0 ~ +70 2 = -10 ~ +60 3 = -20 ~ +70 4 = -20 ~ +80 5 = -40 ~ +85 6 = -40 ~ +105 0 = other	T = Yes N = No