

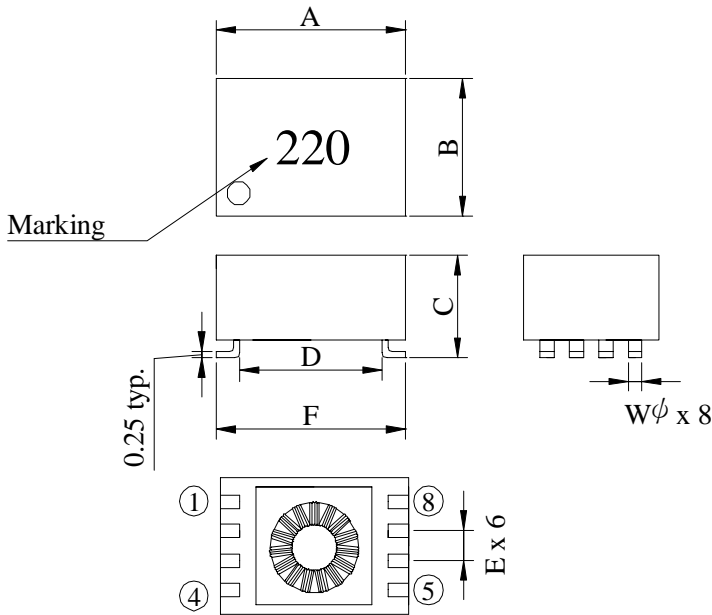
SPECIFICATION FOR APPROVAL

REF :

PAGE : 1

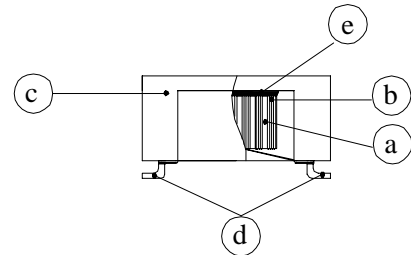
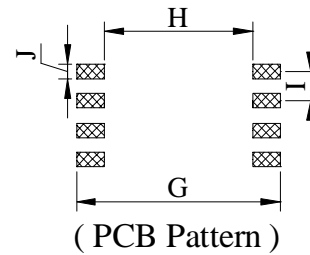
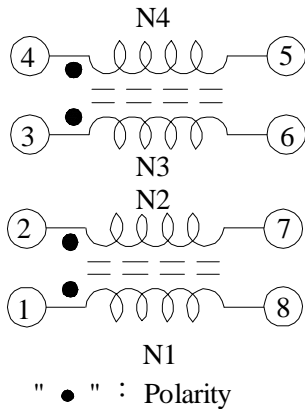
PROD. NAME	SMD LINE FILTER	ABC'S DWG NO.	SF0804□□□□L□
		ABC'S ITEM NO.	

I . CONFIGURATION & DIMENSIONS :



A :	8.20 ± 0.3	m/m
B :	5.80 ± 0.3	m/m
C :	4.50 ± 0.3	m/m
D :	6.30 typ.	m/m
E :	1.27 typ.	m/m
F :	8.12 typ.	m/m
G :	8.52 ref.	m/m
H :	6.25 ref.	m/m
I :	1.27 ref.	m/m
J :	0.60 ref.	m/m
W φ :	0.60 ref.	m/m

II . SCHEMATIC DIAGRAM :



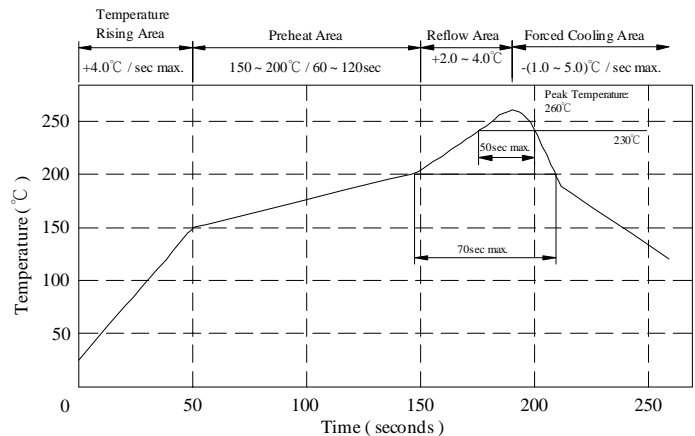
III . MATERIAL DESCRIPTION :

- a . Core : Ferrite core
- b . Wire : Enamelled copper wire (Class F)
- c . Case : LCP (UL94V-0)
- d . Terminal : Cu + Ni / Sn
- e . Adhesive : Epoxy resin

IV . GENERAL SPECIFICATION :

- a . Temp. rise : 25°C max. at rated current
- b . Storage temp. : -40°C ---- +125°C
- c . Operating temp. : -40°C ---- +125°C
(Included Temp. rise)
- d . Resistance to solder heat : 260°C. 10 secs.

Peak Temp : 260°C max.
 Max time above 230°C : 50sec max.
 Max time above 200°C : 70sec max.



SPECIFICATION FOR APPROVAL

REF :

PAGE : 2

PROD. NAME	SMD LINE FILTER	ABC'S DWG NO.	SF0804□□□□L□
		ABC'S ITEM NO.	

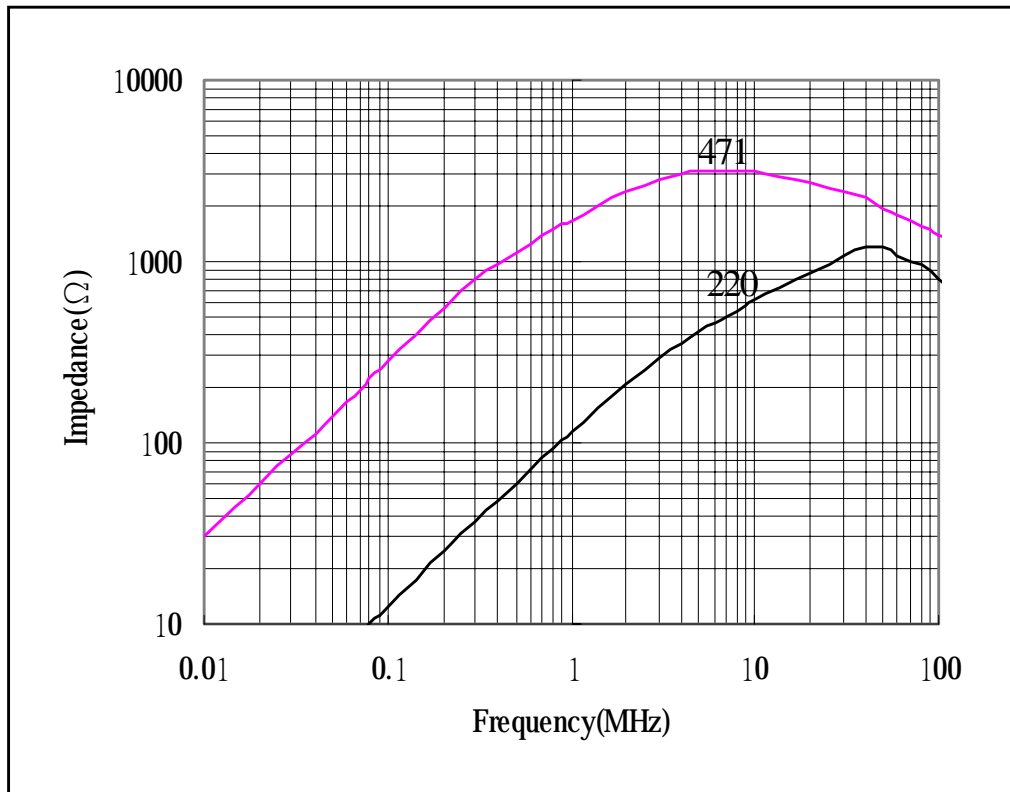
V . ELECTRICAL CHARACTERISTICS :

DWG No.	L (1-8) @ 10KHz , 0.1 Vrms (μ H)	FREQ. Range (MHz)	Impedance min. (Ω)	RDC(Ω) (Each Winding)		IDC(A) Each Winding typ.
				max.	typ.	
SF0804220YL□	22.0 ^{+50%} _{-30%}	20 ~ 80	700	0.14	0.11	0.5
SF0804471YL□	470.0 ^{+50%} _{-30%}	3 ~ 20	1700	0.31	0.25	0.5

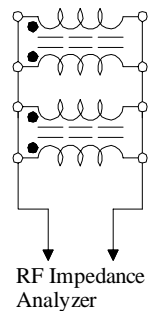
- 1). □ : Packaging information ... A : Bulk B : Taping Reel
- 2). Rated voltage 50 Vdc / 100 Vdc(ref.)
- 3). Hi-Pot (N-N) : 500 Vac / 60 Hz , 3 mA / 1sec.

VI . CHARACTERISTICS CURVE :

IMPEDANCE VS. FREQUENCY



Measuring circuit :



SPECIFICATION FOR APPROVAL

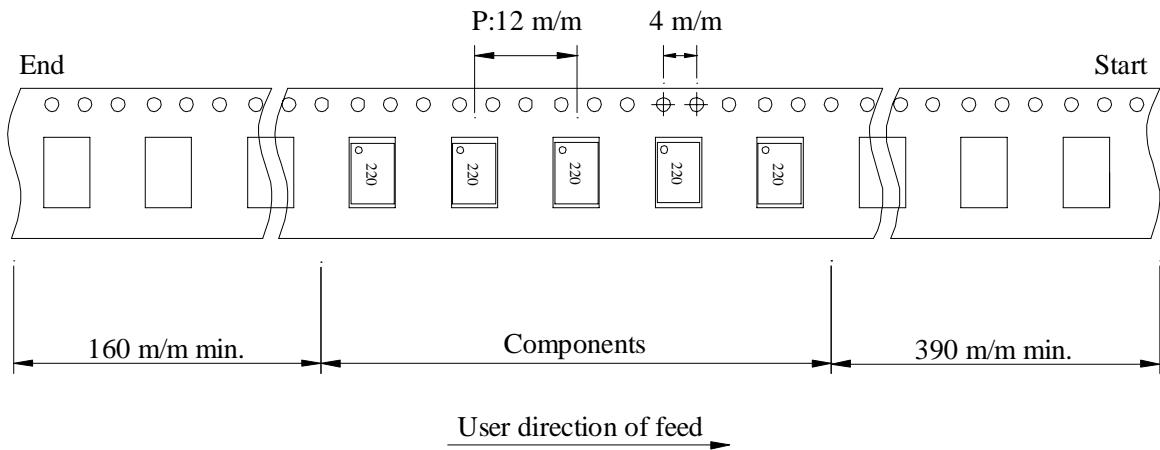
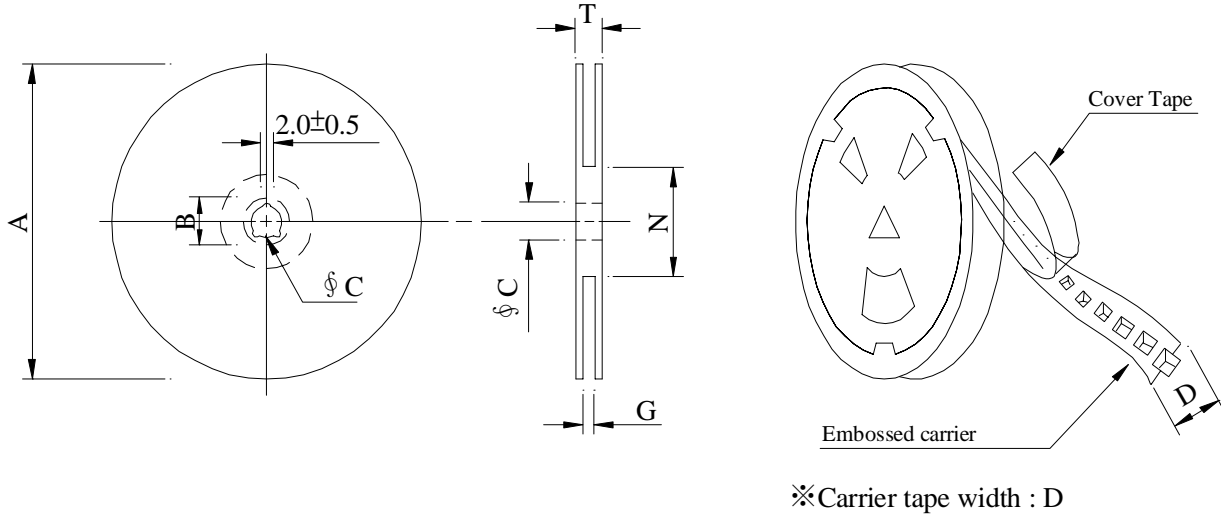
REF :

PAGE: 3

PROD. NAME	SMD LINE FILTER	ABC'S DWG NO.	SF0804□□□□L□
		ABC'S ITEM NO.	

VII . PACKAGING INFORMATION :

(1) Configuration



(2) Dimensions

Unit:m/m

Style	A	B	C	D	G	N	T
13 - 16	330	21±0.8	13±0.5	16	18 ⁺⁰	50 ⁻⁰	22.4

(3) Q'TY & G.W. Per package

Series	Inner : Reel			Outer : Carton		
	Q'TY (pcs)	G.W. (gw)	Style	Q'TY (pcs)	G.W. (Kg)	Size (cm)
SF0804	1,000	300	13 - 16	6,000	3.5	40 x 40 x 24

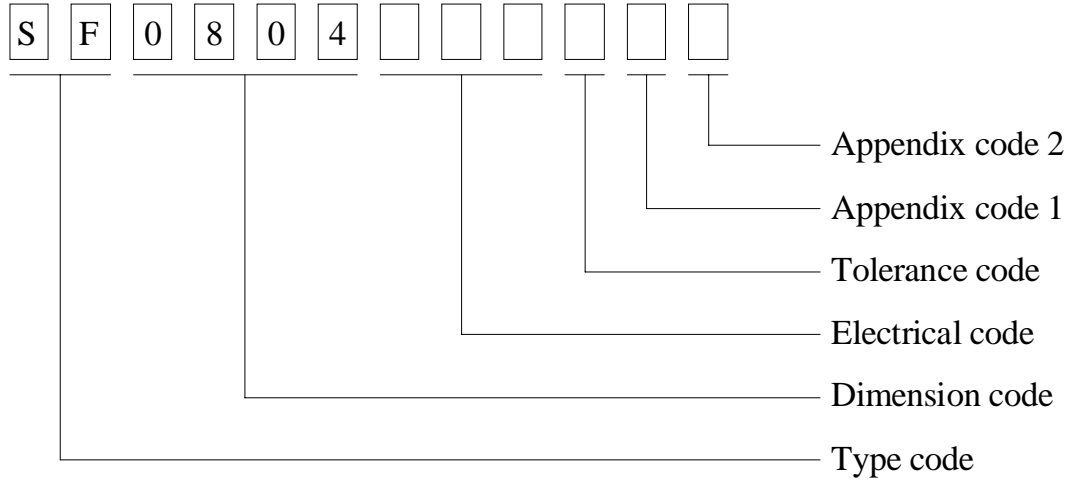
SPECIFICATION FOR APPROVAL

REF :

PAGE: 4

PROD. NAME	SMD LINE FILTER	ABC'S DWG NO.	SF0804□□□□L□
		ABC'S ITEM NO.	

VIII . DWG EXPRESSION :



Appendix code 1 : S : Standard products
 A~R , T~Z : Special products

Appendix code 2 :

Code	Inner Package	Inner Package Q'TY	Remark
A	Empty	Empty	
B	T / R (Reel Package)	1000 PCS	

SPECIFICATION FOR APPROVAL

REF :

PAGE: 5

PROD. NAME	SMD LINE FILTER	ABC'S DWG NO.	SF0804□□□□L□
		ABC'S ITEM NO.	

IX . RELIABILITY TEST :

Test item	Specification	Test condition						
Solderability	More than 90% of the terminal electrode shall be covered With fresh solder.	Preheat : $150 \pm 25^{\circ}\text{C}$ for 60 seconds Solder : Sn96.5 / Ag3 / Cu0.5 or equivalent Solder temp. : $260 \pm 5^{\circ}\text{C}$ Flux : Rosin Dip time : 4 ± 1 seconds						
Thermal shock test (Temp. cycle)	Inductance shall not change more than $\pm 35\%$	<table style="width: 100%; border: none;"> <tr> <td style="text-align: center;">Room temp. 15 minutes</td> <td style="text-align: center;">—————▶</td> <td style="text-align: center;">$-25 \pm 2^{\circ}\text{C}$ 30 minutes</td> </tr> <tr> <td style="text-align: center;">Room temp. 15 minutes</td> <td style="text-align: center;">—————▶</td> <td style="text-align: center;">$85 \pm 2^{\circ}\text{C}$ 30 minutes</td> </tr> </table> <p>Total : 50 cycles</p>	Room temp. 15 minutes	—————▶	$-25 \pm 2^{\circ}\text{C}$ 30 minutes	Room temp. 15 minutes	—————▶	$85 \pm 2^{\circ}\text{C}$ 30 minutes
Room temp. 15 minutes		—————▶	$-25 \pm 2^{\circ}\text{C}$ 30 minutes					
Room temp. 15 minutes		—————▶	$85 \pm 2^{\circ}\text{C}$ 30 minutes					
Humidity Resistance test		Temperature : $40 \pm 2^{\circ}\text{C}$ Humidity : 90 ~ 95% Applied current : Per spec. Time : 500 hours						
High temp. Resistance test	Temperature : $85 \pm 2^{\circ}\text{C}$ Applied current : Per spec. Time : 500 hours							

SPECIFICATION FOR APPROVAL

REF :

PAGE: 6

PROD. NAME	SMD LINE FILTER	ABC'S DWG NO.	SF0804□□□□L□
		ABC'S ITEM NO.	

X . UL CARD :

OBMW2		June 11, 1990	
Component-Magnet Wire			
TOTOKU ELECTRIC CO LTD		E79029 (S)	
(B-cont, from A card)			
MZW	Polyurethane	Polyvinyl Butyral	— 130
LOCKW	Polyurethane	Polyvinyl	— 130
PESVW	Polyester	Polyvinyl	— 155
EILOCKW	Polyurethane	Modified Epoxy	— 200
SF-BW	Modified Polyester		MW26-C 155
SF.H EIW	Modified Polyesterimide		— 180
THW	Polyesterimide	Polyamideimide	MW35C 220
LOCK Y	Polyurethane	Polyvinyl	— 130
Report: May 9, 1983.			
71507702 H3108		Underwriters Laboratories Inc. ®	
		(Cont. on C card) D11 / 0096640	

SUMITOMO CHEMICAL CO LTD		E54705 (M)	
5-33 KITAHAMA 4-CHOME CHUO-KO, OSAKA JAPAN			
Mtl Dsg	Col	Min Thk mm	UL94 Flame Class
		Elec	RTI Mech with Imp
		w/o Imp	H W I
			H A I
			H V R
			D 4 5
			C T I
Liquid crystal polyester (LCP), designated "EKONOL" or "SUMIKASUPER", furnished in the form of pellets, (Contd)			
E4008 , E400X	NC , BK	0.30	94V-0
		0.75	94V-0
		1.5	94V-0
		3.0	94V-0
E4008	NC , WT , BK	0.30	94V-0
		0.75	94V-0
		1.5	94V-0
		3.0	94V-0
E4010	NC , BK	0.30	94V-0
		0.75	94V-0
		1.5	94V-0
		3.0	94V-0
E400(Y)L , E4008L	NC , BK	0.30	94V-0
		0.75	94V-0
		1.5	94V-0
		3.0	94V-0
E4810	NC , BK	0.30	94V-0
		0.75	94V-0
		1.5	94V-0
		3.0	94V-0
(X) Denotes any number 1 thru 9. (Y) Denotes any number 1 thru 7.			

AE-001A

