

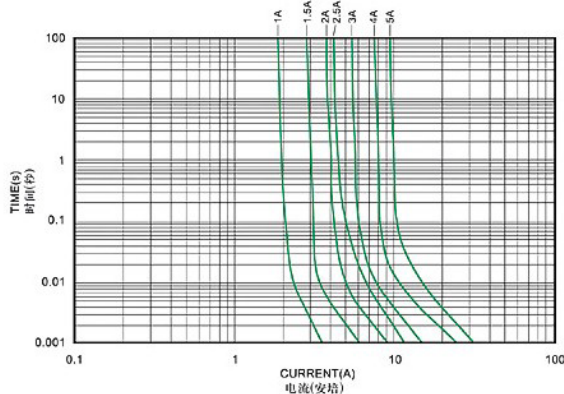
1206FT

**Ⓜ 1206FT**

表面贴装片式保险丝(速断型)

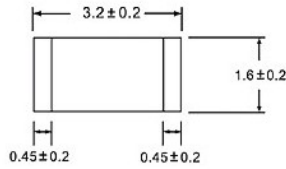
SURFACE MOUNT CHIP FUSE (FAST-ACTING)

1206FT RoHS I-T CHARACTERISTICS CURVE  
1206FT RoHS 电流-时间曲线图

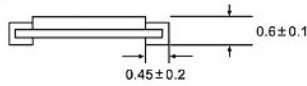


尺寸 DIMENSIONS:

上面 TOP VIEW:



侧面 SIDE VIEW:



单位 Unit:mm



目录编号 CATALOG NO.	额定电流 CURRENT RATING (代码MARKING CODE)	额定电压 VOLTAGE RATING	安全认证 SAFETY APPROVALS	
			UR	CUR
1206FT-0500L	500mA (F)	32V	○	○
1206FT-0750L	750mA (G)	32V	○	○
1206FT-010L	1A (H)	32V	○	○
1206FT-015L	1.5A (K)	32V	○	○
1206FT-020L	2A (N)	32V	○	○
1206FT-025L	2.5A (O)	32V	○	○
1206FT-030L	3A (P)	32V	○	○
1206FT-040L	4A (S)	32V	○	○
1206FT-050L	5A (T)	32V	○	○

L DENOTES FOR 32V (L 表示 32V)

○ DENOTES FOR PENDING (○ 表示申请中)

分断电流:

INTERRUPTING RATING:  
50A 32V DC

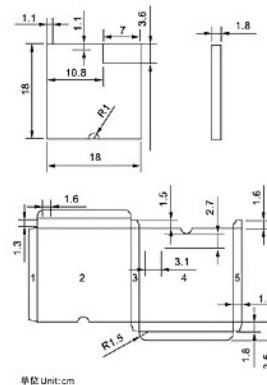
电气特性 ELECTRICAL CHARACTERISTICS:

额定电流的% % of CURRENT RATING	熔断时间 BLOWING TIME
100%	最快4小时 4 hours Min.
200%	最慢120秒 120 seconds Max.
250%	最慢5秒 5 seconds Max.

包装 PACKING:

5,000 PIECES TAPED AND REELED IN ONE BOX  
每卷5,000只保险丝, 装入一个包装盒

包装盒尺寸  
BOX SIZE



单位 Unit:cm