

SPECIFICATION FOR APPROVAL

REF :

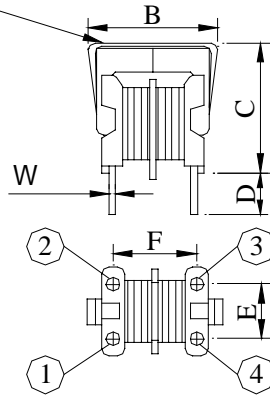
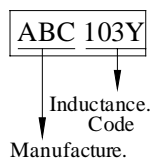
PAGE: 1

PROD. NAME	LINE FILTER	ABC'S DWG NO. ABC'S ITEM NO.	UF09□□□□□□L□
---------------	-------------	---------------------------------	--------------

I . CONFIGURATION & DIMENSIONS :

●UF09V2 Series

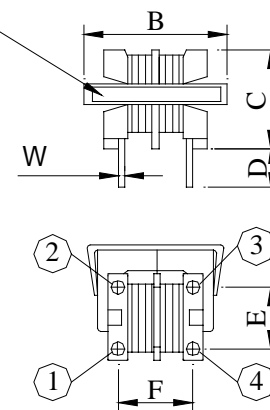
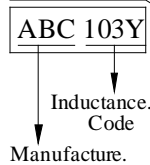
Marking:



A :	11.5 max.	m/m
B :	16.5 max.	m/m
C :	17.0 max.	m/m
D :	5.0±1.0	m/m
E :	7.0±0.5	m/m
F :	8.0±0.5	m/m
W :	0.6±0.05	m/m

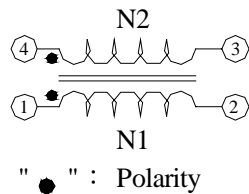
●UF09H2 Series

Marking:



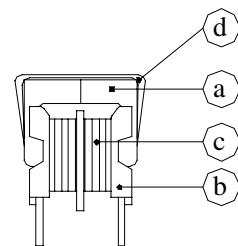
A :	15.0 max.	m/m
B :	16.5 max.	m/m
C :	13.0 max.	m/m
D :	5.0±1.0	m/m
E :	7.0±0.5	m/m
F :	8.0±0.5	m/m
W :	0.6±0.05	m/m

II . SCHEMATIC DIAGRAM :



III . MATERIALS :

- a . Core : Ferrite UU core
- b . Bobbin : Phenolic
- c . Wire : Enamelled copper wire (class F)
- d . Clip : High carbon steel
- e . Coating : Varnish
- f . Remark : lead content 200ppm max. include ferrite



AE-001A

SPECIFICATION FOR APPROVAL

REF :

PAGE: 2

PROD. NAME	LINE FILTER	ABC'S DWG NO.	UF09□□□□□□L□
		ABC'S ITEM NO.	

IV . GENERAL SPECIFICATION :

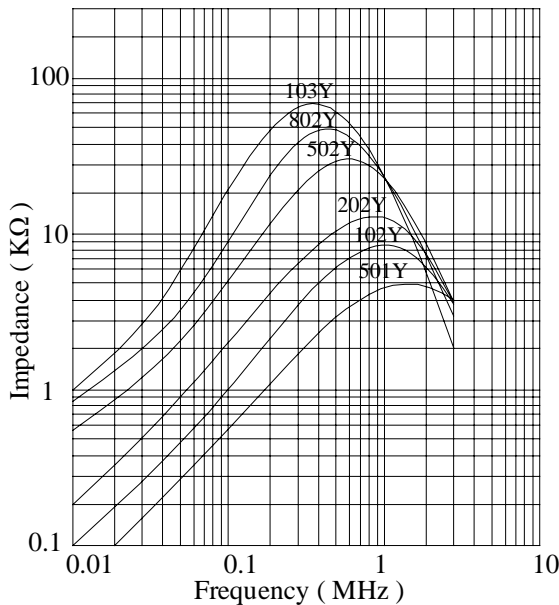
- a . Temp. rise : 40°C max. at rated current
- b . Storage temp. : -40°C ---- +105°C
- c . Operating temp. : -25°C ---- +85°C
- d . Pin strength : 1.0KG min.

V . ELECTRICAL CHARACTERISTICS :

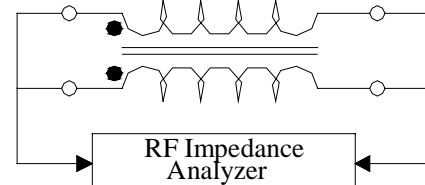
DWG No.	L (mH) min.	RDC (Ω) max.	Rated Current (Aac)
UF09V2/ UF09H2501YL□	0.5	0.2	1.4
UF09V2/ UF09H2102YL□	1.0	0.4	1.0
UF09V2/ UF09H2202YL□	2.0	0.8	0.7
UF09V2/ UF09H2502YL□	5.0	1.6	0.5
UF09V2/ UF09H2802YL□	8.0	2.5	0.4
UF09V2/ UF09H2103YL□	10.0	3.6	0.3

1). □ : Packaging information... A } Bulk

VI . IMPEDANCE VS FREQUENCY CURVE :



● IMPEDANCE MEASURING CIRCUIT :



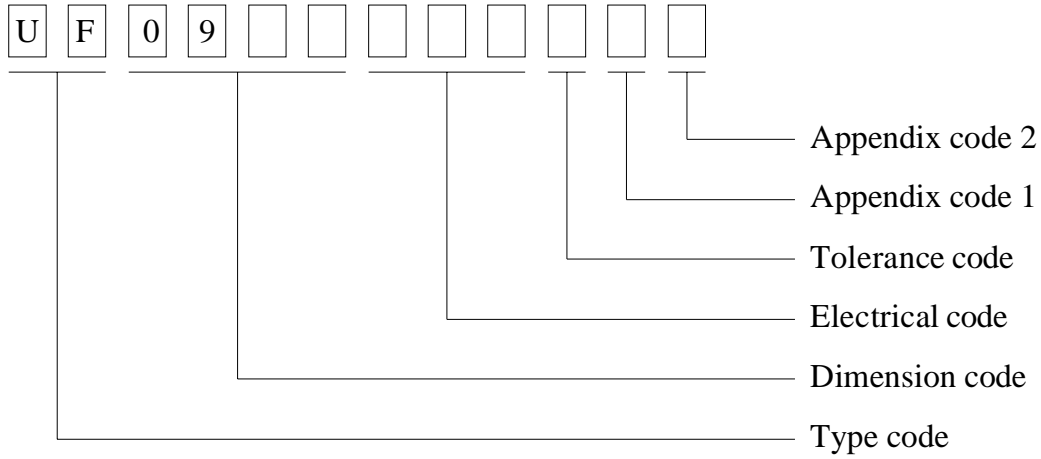
SPECIFICATION FOR APPROVAL

REF :

PAGE: 3

PROD. NAME	LINE FILTER	ABC'S DWG NO.	UF09□□□□□□L□
		ABC'S ITEM NO.	

VII . DWG EXPRESSION :



- Appendix code 1 : S : Standard products
 A ~ K , M ~ R , T ~ Z : Special products
 L : Standard Lead Free products
 1 ~ 9 : Special Lead Free products

Appendix code 2 :

Code	Inner package	Inner package Q'TY	Remark
A	Tray	182 pcs	(B Type)

SPECIFICATION FOR APPROVAL

REF :

PAGE: 5

PROD. NAME	LINE FILTER	ABC'S DWG NO.	UF09□□□□□□L□
		ABC'S ITEM NO.	

QMFZ2		March 4, 1994	
Component - Plastics			
CHANG CHUN PLASTICS CO LTD			
			E59481(S)
			(C--cont. From B card)
T355J	BK	0.62 0.80 1.00	94V-0 94V-0 94V-0
		150 150 150	150 150 150
			150 150 150
			1 1 1
			0 0 0
			2 2 2
			6 6 6
			3 3 3
T359J	BK,BN NC (a)	0.79 1.57 3.17	9411B 94HB 94HB
		150 150 150	150 150 150
			150 150 150
			1 1 0
			0 0 0
			4 4 4
			7 7 7
			4 4 4
T373J	BK,BN	1.00 1.00 2.00	94V-1 94V-0 94V-0
		150 150 150	150 150 150
			150 150 150
			2 2 1
			0 0 0
			3 3 3
			6 6 6
			4 4 4
T375J	BK,BN	0.79 1.58 3.17	94V-0 94V-0 94V-0
		150 150 150	150 150 150
			150 150 150
			1 0 0
			0 0 0
			4 4 4
			5 5 5
			4 4 4
T377J	BK	0.79 1.58 3.17	94HB 94HB 94HB
		150 150 150	150 150 150
			150 150 150
			2 1 0
			0 0 0
			4 4 4
			7 7 7
			4 4 4
Report: January 6, 1976.			
Replaces E59481C dated February 7, 1989.			
262854001	N7047	Underwriters Laboratories Inc.®	(Cont. on C1F card) D11/0018965

OBOR2		January 12, 1996	
Component-Varnishes			
JOHN C DOLPH CO			E51047 (M)
320 NEW RD PO BOX 267 , MONMOUTH			(A card)
JUNCTION NJ 08852			
Varnish	ANSI	Varnish	
Dag	Magnet	Thermal Class C	CE
	Wire Type	HC	
AC-43	MW28	130	—
	MW24	155	—
EB-43-FB	MW35	155	—
AC-43-66	MW28	130	—
	MW35	155	—
	MW24	155	—
BB-353	MW35	200	—
BC-326	MW36	200	—
Report: June 20, 1980.			
Replaces E51047A dated September 18, 1994.			
452548001	H0767	Underwriters Laboratories Inc.®	(Cont. on A005 card) D11/0025721
			34

AE-001A

