
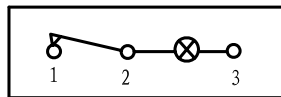




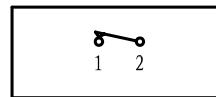
<ul style="list-style-type: none"> * Product Name: Rocker Switch; * Model No: YSR-11 (B) * Voltage Resistance: 2000VAC, 1MIN; * Operating Temperature: T85 * Electrical Life: more than 10,000cycles * Contact Rating: UL CUL: 3/6A 250/125VAC, 5/10A 250/125VAC 			
KNOB COLOR		BLACK; RED; GREEN; ORANGE; BLUE; ...	
BASE COLOR		GRAY; BLACK; WHITE; ...	
KNOB SHAPE		TYPE C: 	
Illuminate	YSR-11-11 (B) /N 1P1T 3P	Unilluminate	YSR-11-11 (B) 1P1T 2P



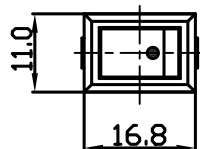
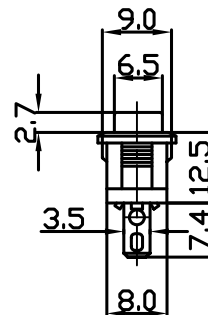
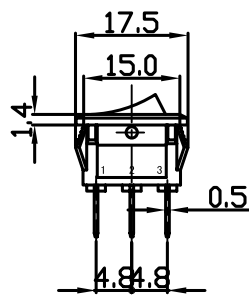
Wiring Diagram



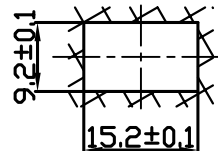
YSR-11-11 (B) /N
On-Off (Illuminate)



YSR-11-11 (B)
On-Off (Unilluminate)



Panel Installation Size



Panel Installation
Thickness 1 ~ 4mm