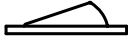
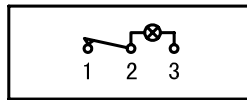




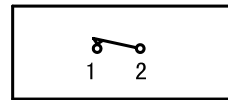
- * Product Name: Rocker Switch;
- * Model No: YSR-11 (C)
- * Voltage Resistance: 2000VAC, 1MIN;
- * Operating Temperature: T85
- * Electrical Life: more than 10,000cycles
- * Contact Rating: UL CUL: 3/6A 250/125VAC, 5/10A 250/125VAC
6.5/13A 250/125VAC, 10/15A 250/125VAC

KNOB COLOR	BLACK; RED; GREEN; ORANGE; BLUE; ...		
BASE COLOR	GRAY; BLACK; WHITE; ...		
KNOB SHAPE	TYPE A: 		
Illuminate	YSR-11-11 (C) /N 1P1T 3P	Unilluminate	YSR-11-11 (C) 1P1T 2P

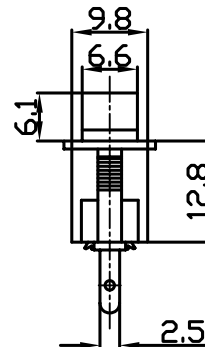
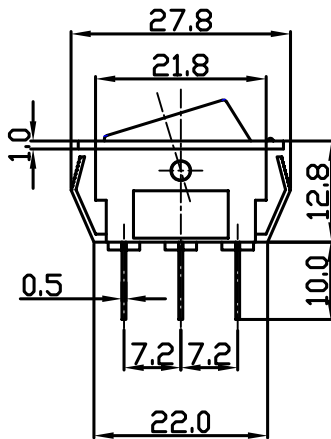
Wiring Diagram



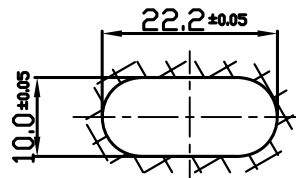
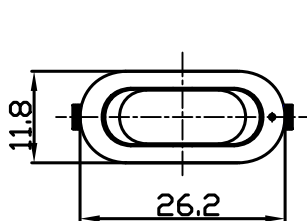
YSR-11-11 (C) /N
On-Off (Illuminate)



YSR-11-11 (C)
On-Off (Illuminate)



Panel Installation Size



Panel Installation
Thickness 1 ~ 4mm