


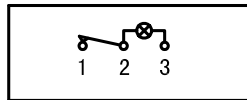


- \* Product Name: Rocker Switch;
- \* Model No: YSR-14
- \* Voltage Resistance: 2000VAC, 1MIN;
- \* Operating Temperature: T85
- \* Electrical Life: more than 10,000cycles
- \* Contact Rating: UL CUL: 3/6A 250/125VAC, 5/10A 250/125VAC  
6.5/13A 250/125VAC, 10/15A 250/125VAC  
15/20A 250/125VAC, 1/3HP 125VAC  
VDE: 13A 250V ~

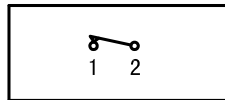


Knob Color	BLACK; RED; GREEN; ORANGE; BLUE; ...		
Base Color	GRAY; BLACK; WHITE; ...		
Knob Shape	TYPE C: 	Unilluminate	YSR-14-12 1P2T 3P
Illuminate	YSR-14-11/N 1P1T 3P		YSR-14-11 1P1T 2P

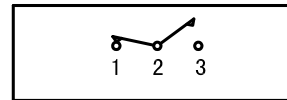
### Wiring Diagram



YSR-14-11/N

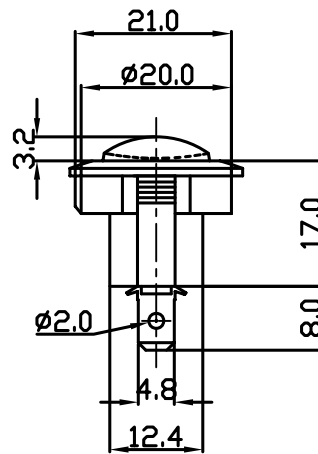
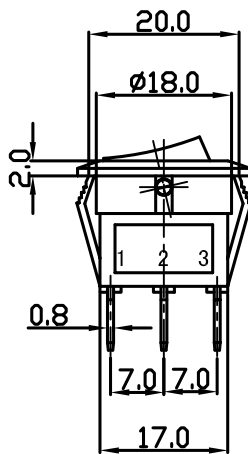


YSR-14-11

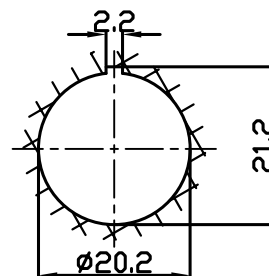
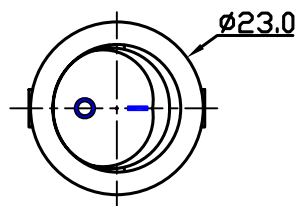


YSR-14-12

On-Off (Illuminate) On-Off (Unilluminate) On-On (Unilluminate)



### Panel Installation Size



Panel Installation Thickness 1 ~ 4mm