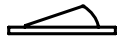




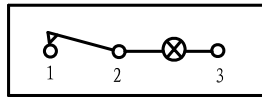


- * Product Name: Rocker Switch;
- * Model No: YSR-15(2)
- * Voltage Resistance: 2000VAC, 1MIN;
- * Operating Temperature: T85
- * Electrical Life: more than 10,000cycles
- * Contact Rating: UL CUL: 10/15A 250/125VAC, 16/20A 250/125VAC, 1/2HP 125VAC
VDE: 16A 250V ~

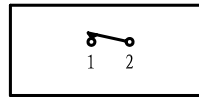


KNOB COLOR	BLACK; RED; GREEN; ORANGE; BLUE; ...		
BASE COLOR	GRAY; BLACK; WHITE; ...		
KNOB SHAPE	TYPE A: 	TYPE B: 	TYPE C: 
Illuminate	YSR-15-11(2)/N 1P1T 3P	Unilluminate	YSR-15-11(2) 1P1T 2P YSR-15-12(2) 1P2T 3P YSR-15-13(2) 1P2T 3P

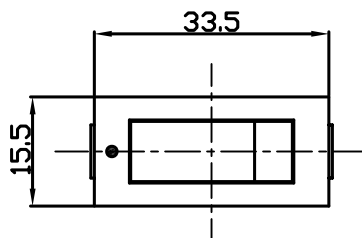
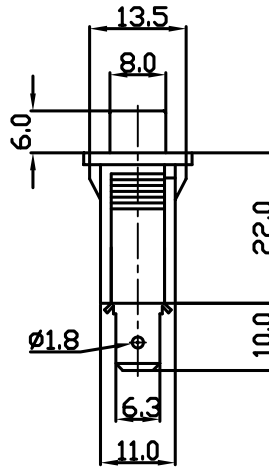
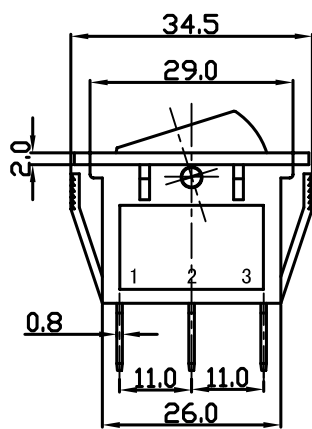
Wiring Diagram



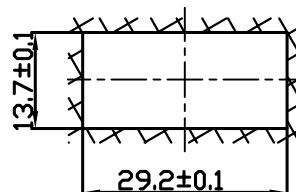
YSR-15-11(2)/N
On-Off (Illuminate)



YSR-15-11(2)
On-Off (Unilluminate)



Panel Installation Size



Panel Installation
Thickness 1 ~ 4mm