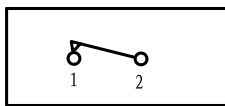


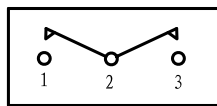


<ul style="list-style-type: none"> * Product Name: Rocker Switch; * Model No: YSR-15 (6) * Voltage Resistance: 2000VAC, 1MIN; * Operating Temperature: T85 * Electrical Life: more than 10, 000cycles * Contact Rating: UL CUL: 10/15A 250/125VAC, 16/20A 250/125VAC, 1/2HP 125VAC 	
KNOB COLOR	BLACK; RED; GREEN; ORANGE; BLUE; ...
BASE COLOR	GRAY; BLACK; WHITE; ...
KNOB SHAPE	TYPE C:
Unilluminate	YSR-15-11 (6) 1P1T 2P, YSR-15-12 1P2T 3P, YSR-15-13 1P2T 3P

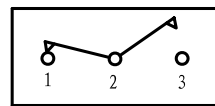
Wiring Diagram



YSR-15-11 (6)

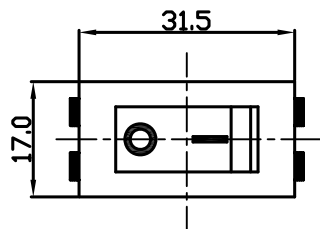
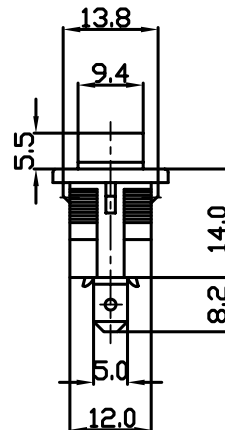
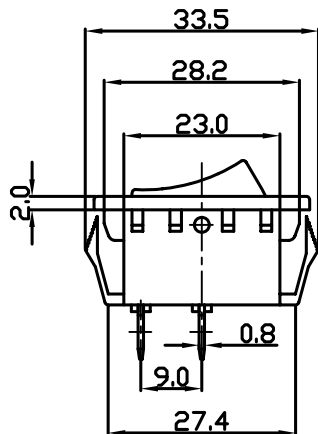


YSR-15-13 (6)

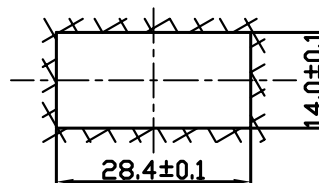


YSR-15-12 (6)

On-Off (Unilluminate) On-Off-On (Unilluminate) On-On (Unilluminate)



Panel Installation Size



Panel Installation Thickness 1 ~ 4mm