


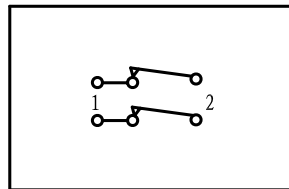


- \* Product Name: Rocker Switch;
- \* Model No: YSR-24
- \* Voltage Resistance: 2000VAC, 1MIN;
- \* Operating Temperature: T85
- \* Electrical Life: more than 10,000cycles
- \* Contact Rating: UL CUL: 6/10A 250/125VAC, 3/6A 250/125VAC

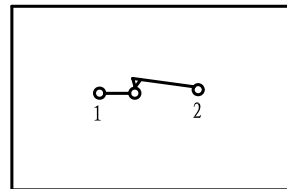


KNOB COLOR	BLACK; RED; GREEN; ORANGE; BLUE; ...
BASE COLOR	GRAY; BLACK; WHITE; ...
KNOB SHAPE	TYPE C: 
Illuminate	YSR-24-21 2P1T 4P,      YSR-24-11 1P1T 2P

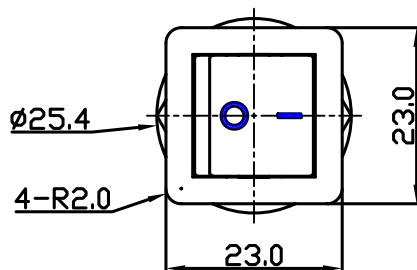
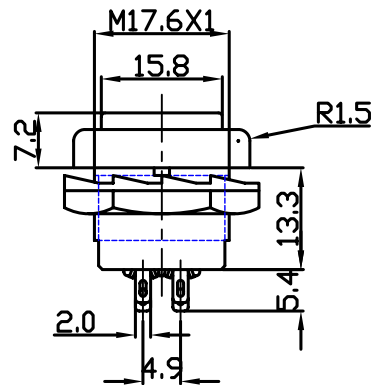
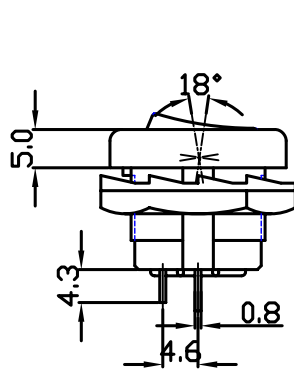
### Wiring Diagram



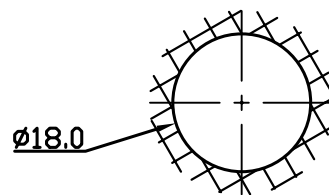
YSR-24-21  
On-Off (Unilluminate)



YSR-24-11  
On-Off (Unilluminate)



### Panel Installation Size



Panel Installation  
Thickness 1 ~ 4mm