



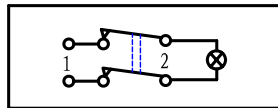


- \* Product Name: Rocker Switch;
- \* Model No: YSR-34-21
- \* Voltage Resistance: 2000VAC, 1MIN;
- \* Operating Temperature: T85 T105
- \* Electrical Life: more than 10,000cycles
- \* Contact Rating: UL、CUL: 3/6A 250/125VAC, 5/10A 250/125VAC, 6.5/13A 250/125VAC  
10/15A 250/125VAC, 16A 250/125VAC, 1/2HP 125VAC  
VDE: 3 (1) A 250V ~ , 6 (2) A 250V ~ , 10 (4) A 250V ~

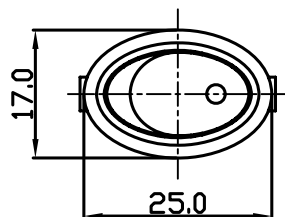
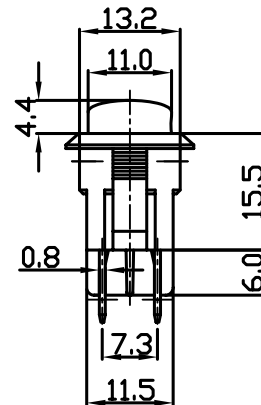
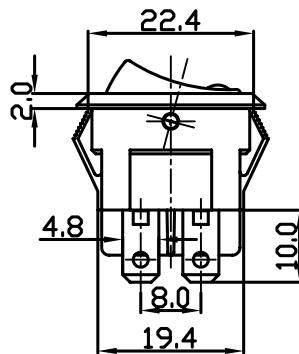


KNOB COLOR	BLACK; RED; GREEN; ORANGE; BLUE; ...		
BASE COLOR	GRAY; BLACK; WHITE; ...		
KNOB SHAPE	TYPE C: 	TYPE D: 	
Illuminate	YSR-34-21/N 2P1T 4P	Unilluminate	YSR-34-21 2P1T 4P

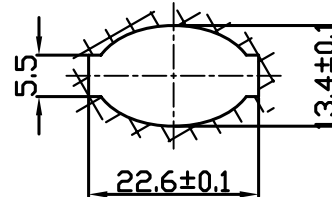
### Wiring Diagram



YSR-34-21/N  
On-Off (Illuminate)



### Panel Installation Size



Panel Installation  
Thickness 1 ~ 4mm